



SVCR GOVT DEGREE COLLEGE
-PALAMANER

STUDY PROJECT ON
MAMMALIAN ORDER

SUBMITTED BY

T.KAVITHA
K.PAVAN KALYAN
B.MOUNIKA
K.KALAIVANI
B.HARI PRASADH

(2021-2022)

SUBMITTED TO

Dr.A.JAYA SANKAR

-MSC,PH.D

DEPARTMENT OF ZOOLOGY
SVCR GOVT DEGREE COLLEGE

-PALAMANER



order 1 : Insectivora

- ⇒ Small and furry animals.
- ⇒ Snout is long tapering.
- ⇒ Teeth sharp and pointed.
- ⇒ Feet plantigrade.
- ⇒ Nocturnal and terrestrial.



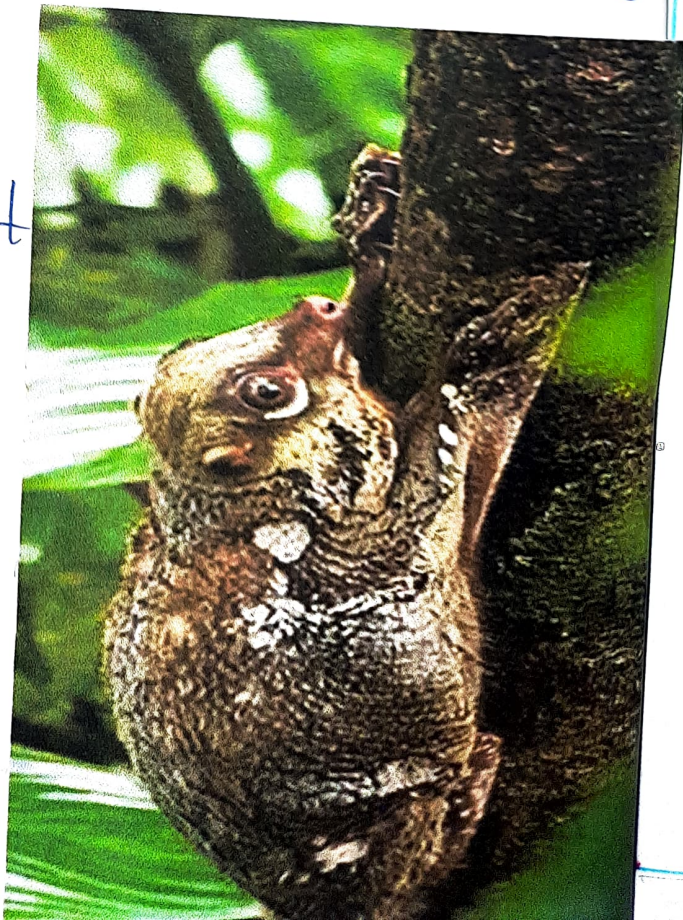
Sorex — shrew

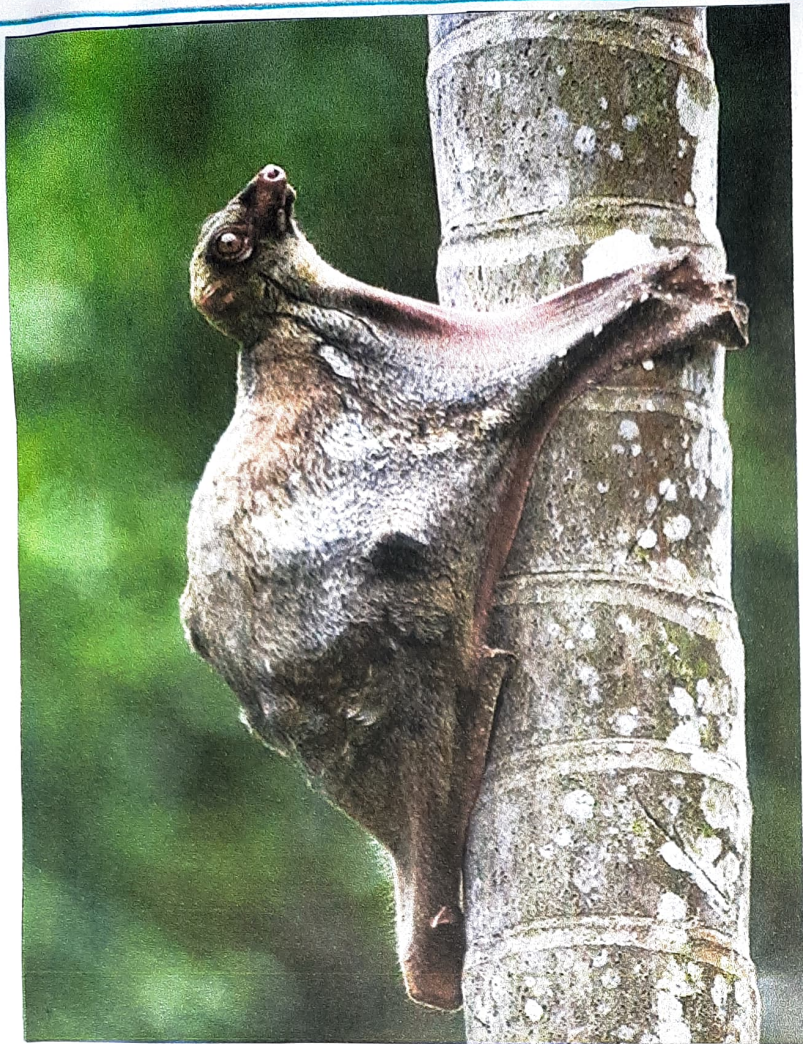


paraechinus - Hedge hog

order 2 : Dermoptera

- ⇒ commonly known as flying lemurs.
- ⇒ All the four limbs are of equal size.
- ⇒ membrane stretched between fore limbs and hind limbs.
- ⇒ Nocturnal in habit





flying -lemur

order 3 : chiroptera

- ⇒ commonly called flying mammals.
- ⇒ forelimbs are modified for flight.
- ⇒ Hindlimbs are weak and have clawed digits
- ⇒ Eyes are small and vision weak.
- ⇒ Ears have large pinnae.
- ⇒ Sternum has a keel.
- ⇒ Mostly nocturnal.



Desmodus



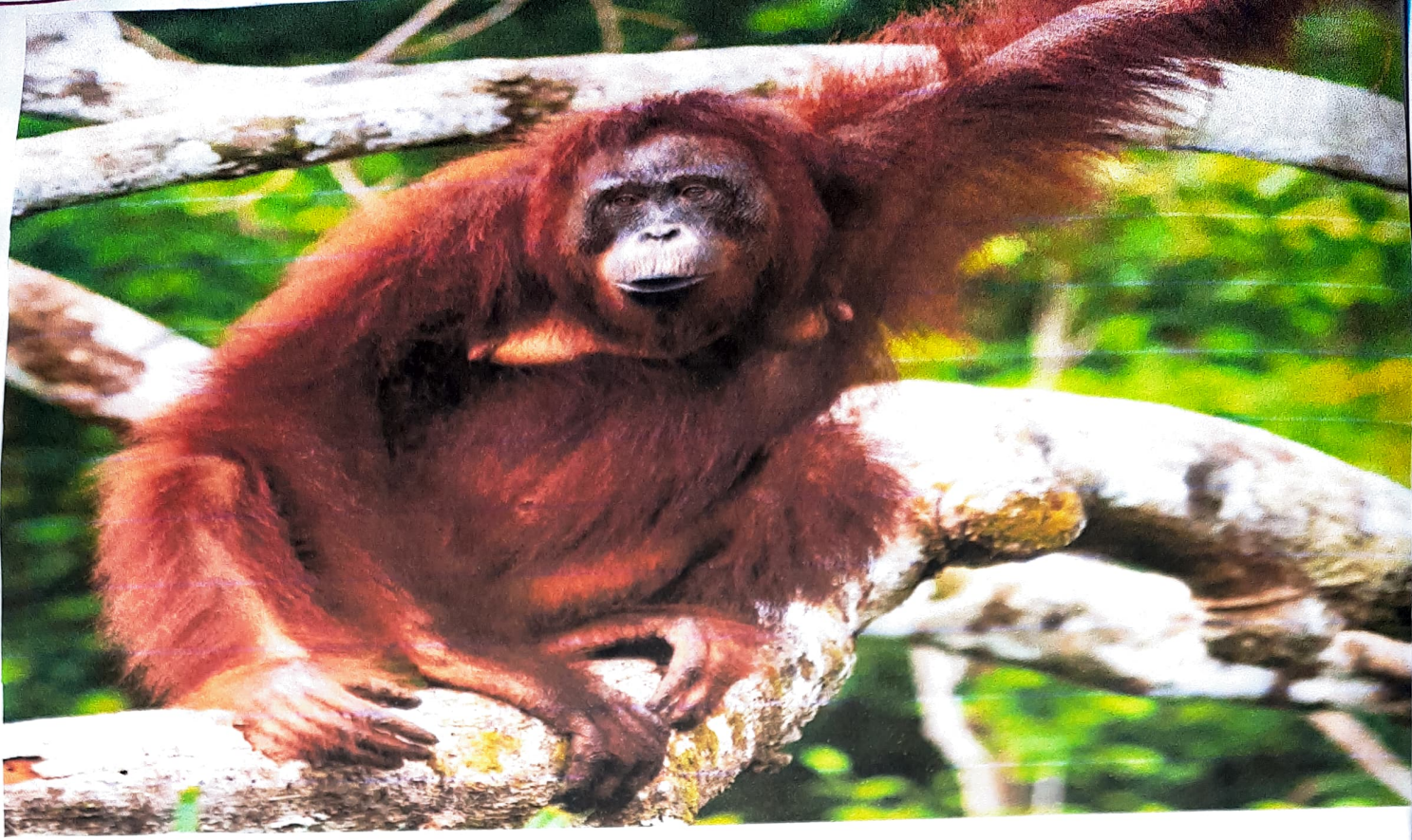
Pteropus

order $\frac{1}{2}$ primates

- \Rightarrow completely hairy and generally arboreal mammals.
- \Rightarrow limb bear five digits each with flat nails.
- \Rightarrow first digits are opposable, an adaptation for holding things.
- \Rightarrow plantigrade animals.
- \Rightarrow orbits are directed forwards and surrounded by bony ring.
- \Rightarrow cerebrum is large and convoluted.

Monkey





Apes

order 5 : Edentata

=> Teeth present or absent. If present
incisors and canines are always absent.

=> Feet have well developed claws.

=> The testes are abdominal.

Ex : Sloths , Armadillos ,

American ant eaters.



Armadillos

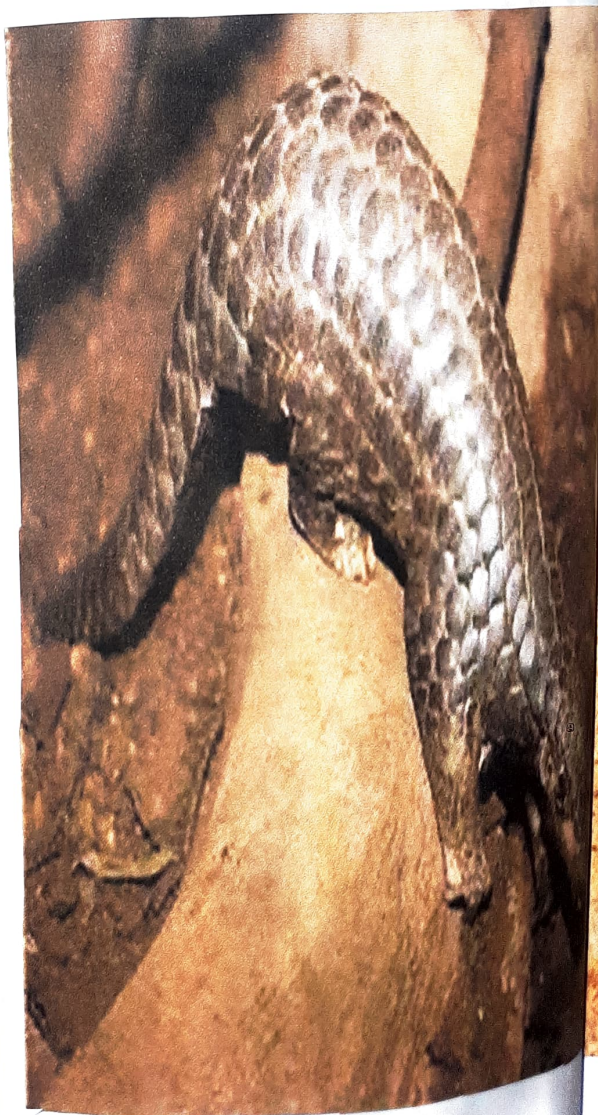
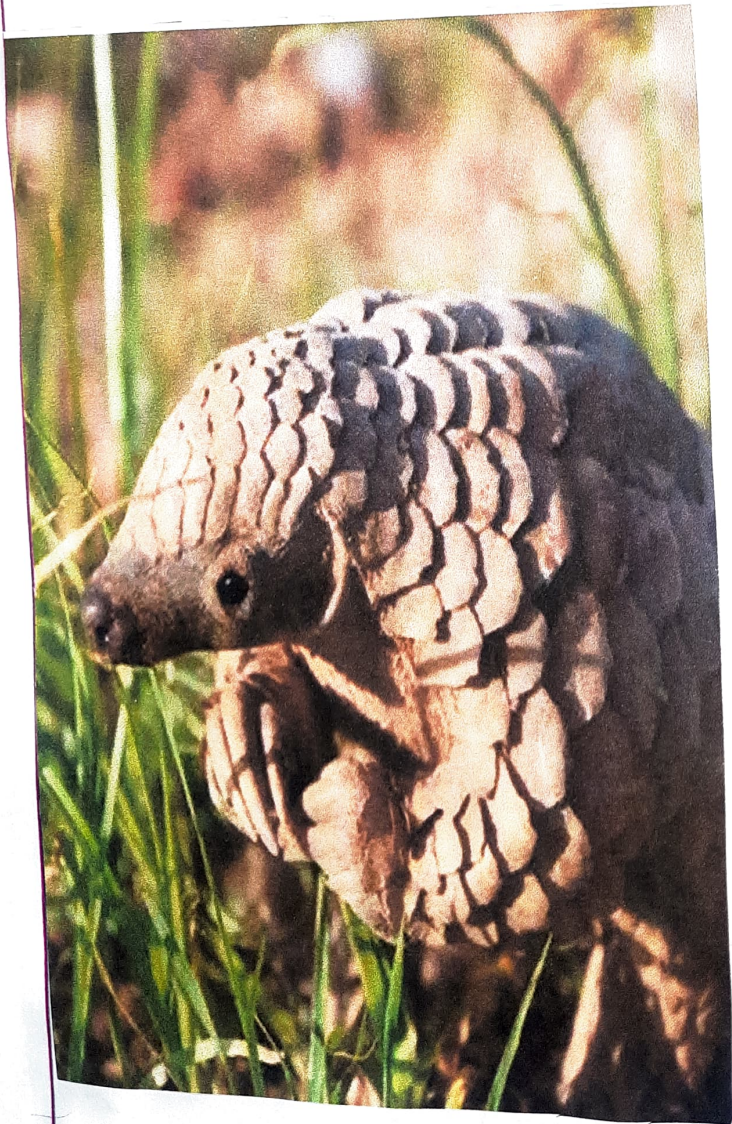


of 11

order 6 : pholidota

- ⇒ commonly called scaly ant eaters.
- ⇒ Body covered by large overlapping horny scales
- ⇒ Hairs found between the scales
- ⇒ Tongue is long, sticky and protrusible.
- ⇒ Teeth are absent and snout elongated.
- ⇒ Nocturnal and burrowing in habits.

Ex. Manis - scaly ant eater



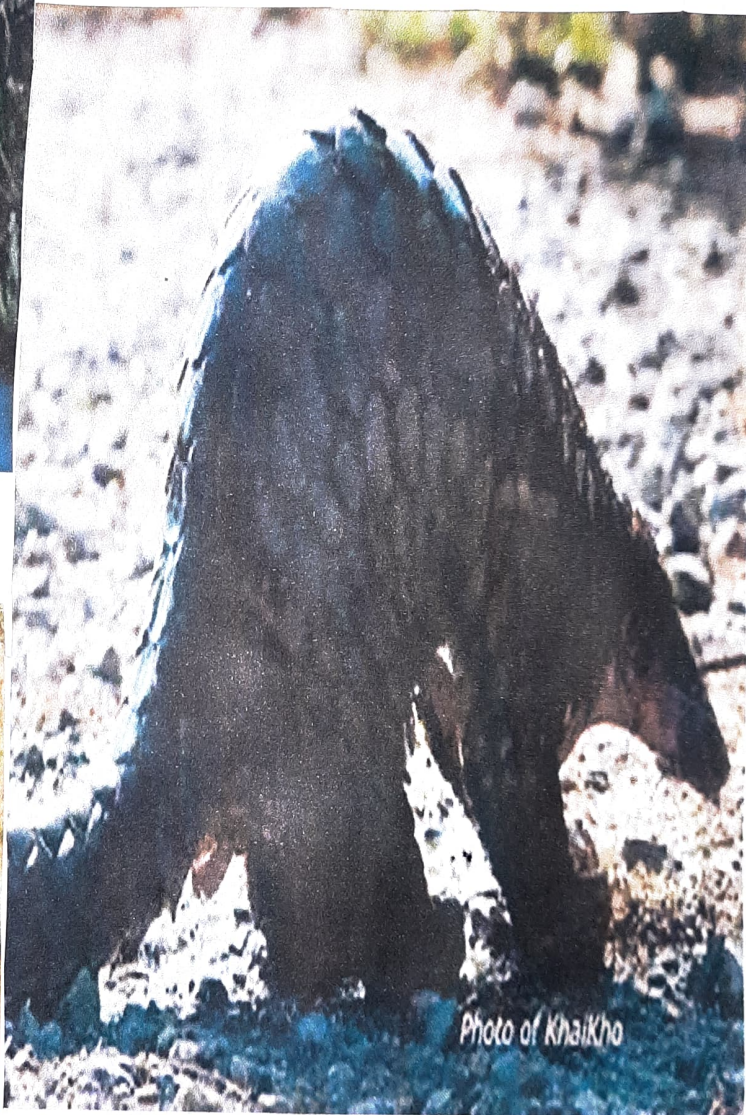


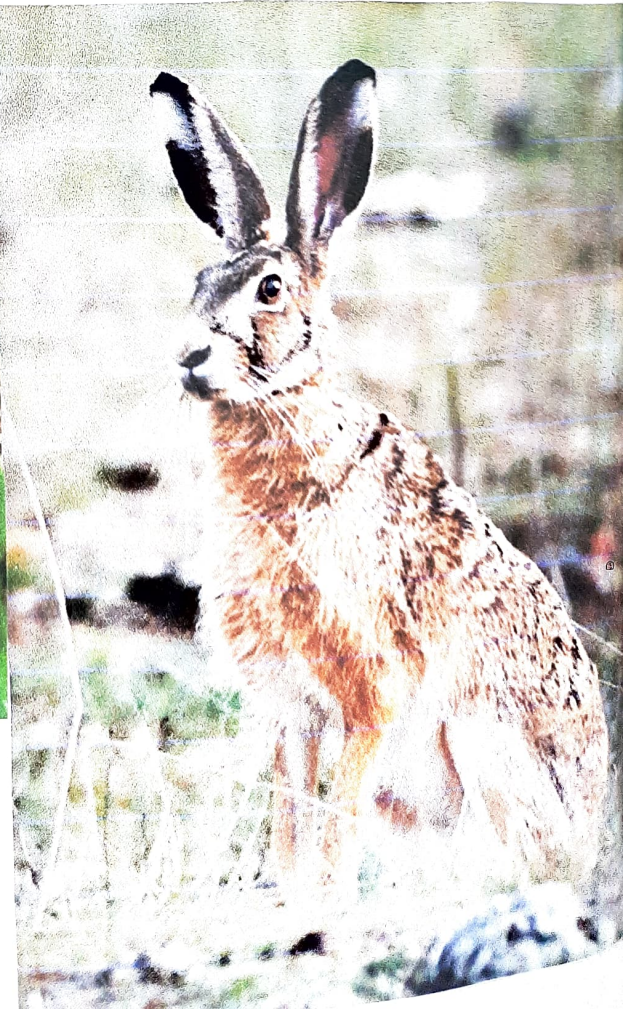
Photo of KhaiKho



order 7 : Lagomorpha

- ⇒ Small to moderate sized mammals.
- ⇒ Due to lack of canines, diastema is present between incisors and premolars.
- ⇒ Tail is short.
- ⇒ Toes bear claws and they are hairy
- ⇒ Pinna are large.

Ex: Rabbits, Hares.



order 8 : Rodentia

- ⇒ usually small mammals.
 - ⇒ Limbs with five clawed toes.
 - ⇒ Canines are absent.
 - ⇒ Incisors exhibit continuous growth.
 - ⇒ Diastema is present.
- Ex: Rattus rattus - rat, Hystrix - porcupine
Funambulus - squirrel.



order 9 : Tubilidentata

- ⇒ Body stout, snout pig like
 - ⇒ Tongue slender and protrusible.
 - ⇒ Ears long, erect and pointed.
- Ex: oryctolopus aard - walk.



Order 10% Cetacea

- ⇒ These are aquatic mammals
 - ⇒ Body is spindle shaped and fish like
 - ⇒ Fore limbs modified into flippers or paddles for swimming.
 - ⇒ Pinna is absent. Eyes are small.
 - ⇒ Hind limbs are absent.
 - ⇒ Tail divided at the end into two flukes.
 - ⇒ A thick layer of blubber present below the skin.
 - ⇒ Testes are abdominal.
- Ex: *Physeter* - sperm whale, *Delphinus* - Dolphin.





order II : carnivora

- ⇒ Teeth are with sharp and cutting edge
canines are well developed. Incisors are small and three on each half of the.
- ⇒ The digits have strong and sharp claws
- ⇒ Tympanic bulla are large and rounded.
- ⇒ Mammæ are abdominal.
- ⇒ The clavicles are incomplete or absent.
Ex: panthera - lion, panthera tigris - Tiger



Order 12 : Proboscidea

- ⇒ Largest and highly specialized terrestrial mammals.
- ⇒ Skin is thick and sparsely covered with hair.
- ⇒ Large head, small eyes, large fan like ears.
- ⇒ Nose and upper lip modified into an elongated proboscis.
- ⇒ The incisor teeth of the upper jaw developed into great tusks.
- ⇒ Canines are absent. Molars are lophodont.
- ⇒ Clavicle is absent.
- ⇒ Testes are abdominal in position.
- ⇒ Longest gestation period [24 months]
Ex: Elephas - Elephant.





order 13 : Hyracoidea

- ⇒ small rabbit like animals with a split snout
- ⇒ Ears are short and the tail is much reduced.
- ⇒ Testes are abdominal.
- ⇒ canines are absent
- ⇒ six pairs of mammae are present.

Ex: Hyrax - coney.



order 14 : Sirenia

- ⇒ Aquatic mammals commonly known as sea cows.
- ⇒ Body stream lined or spindle shaped
- ⇒ Forelimbs are paddle like and hind limbs are absent.
- ⇒ Tail flattened with lateral flukes.
- ⇒ Stomach complex, consisting of several chambers
- ⇒ Testes are abdominal.
- ⇒ Pinna is absent.

Ex: Halicore dugong - dugong, Trichechus.





order 15 : perissodactyla

⇒ odd toed ungulates.

⇒ large sized hoofed mammals.

⇒ middle digits of fore and hind limbs bear most of the weights of the body.

⇒ stomach simple, caecum large and sacculated.

Ex: *Equus caballus* - Horse,

Rhinoceros unicornis - Rhinoceros.



Horse.



Rhinoceros.

order 16 : Artiodactyla

- ⇒ Even toed ungulates.
- ⇒ Teeth are bunodont or selenodont.
- ⇒ Stomach is four chambered
- ⇒ Mamme are few and inguinal or many and abdominal.
- ⇒ Except pig all groups ruminate the food.

⇒ Horns present on head in many individuals.

Ex: Hippopotamus amphibius — River horse,

Camelus bactrianus — camel.

Sus scrofa — wild boar.

